

# Matrox Piranha SwitchNIC-10/8

## Full Preservation of Existing LAN Infrastructure

- Preserves All Client Software, NICs and Cabling, and Eliminates the Need For Bridges and Server NICs.

## Scalability

- 8 LAN Segments (Half Duplex or Full Duplex Selectable) Per PCI Slot. Expansion With Multiple Boards. 16000 Ethernet Addresses Per Board Dynamically Updated Per Segment.

## Performance

- Complete Non-Blocking Switching Architecture, i960® RISC Processor and an On-Board 1 Gbps Bus Provide Wire Speed Switching on All Segments. Bus-Master Direct Memory Access (DMA) Transfer of Data, Processes High Bandwidth Server Requests.

## PCI-Bus Form Factor

- Provides Low Cost, Easy Modular Upgrade, a High Speed Link to the Server's CPU

## Upgradeability

- Direct Connection to Any Fast Ethernet or ATM Controller Provides a Fast Link to Alternate Servers, ATM Switches or WANs

## Reliability

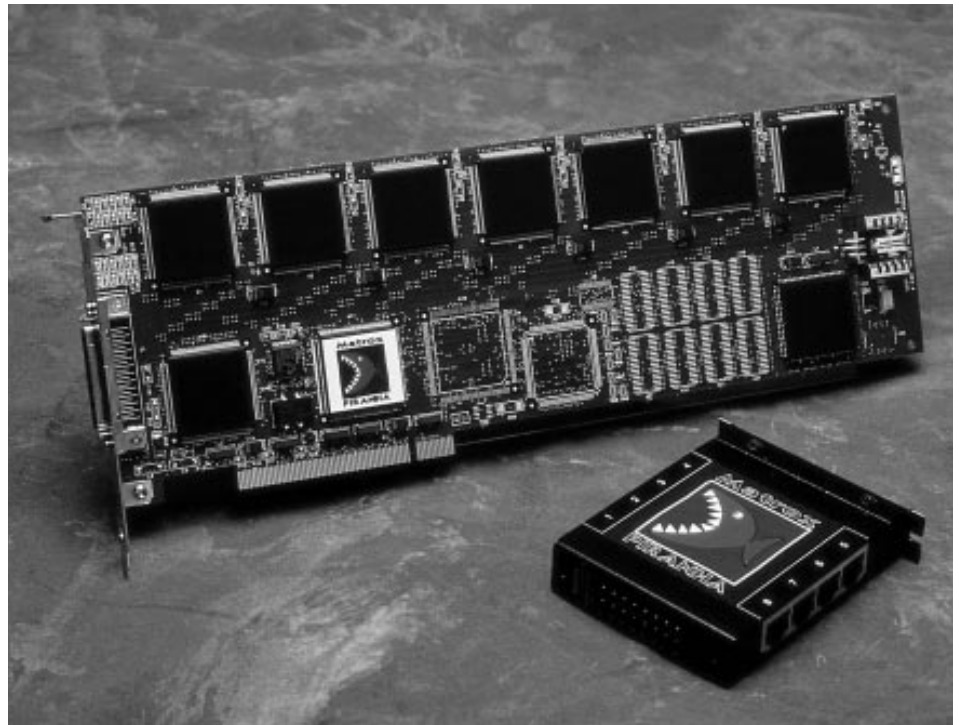
- Spanning Tree Algorithm, CRC Checking and Backup Memory of Address Table

## Software

- SNMP-Agent: MIB II Compliant
- Matrox Guardian: Management, Under HP Open View For Windows\* (Option)
- Drivers: Novell Netware\*, Microsoft Windows NT\* and MS-DOS\*

## Specifications

- Three Year Warranty
- Power: +5V, 4.5 Amp Max.
- Connectors: 8 RJ-45 10BaseT Ethernet Connectors
- 32-Bit Bus-Master Design
- DMA Capability With Unlimited Burst Size
- PCI V2.1 Interface
- Full Support of IEEE 802.3, ANSI 8802-3, and Ethernet Standards



- Status LEDs and Auto Polarity Detect
- Fully PCI Configurable

The Matrox Piranha SwitchNIC-10/8 is a revolutionary board that combines an Ethernet Switch, a Multiport Ethernet Adapter and high speed link to the server – on a single PCI card. It is by far the simplest and most cost effective solution for improving performance in Client/server and Peer to Peer environments. Piranha SwitchNIC-10/8 provides additional bandwidth while preserving all existing software and wiring investments. It eliminates the need for separate cables, bridges and server NICs saving in maintenance and capital investment. Piranha SwitchNIC-10/8's Ethernet drivers enable any server application to run transparently with a significant increase in bandwidth.

Each Piranha Switch NIC-10/8 board provides eight switched Ethernet segments accelerating LAN performance by up to 800%. The Piranha SwitchNIC-10/8's

## CONTACT:

Matrox Electronic Systems  
1025 St. Regis Blvd.

Dorval, Quebec

Canada H9P 2T4

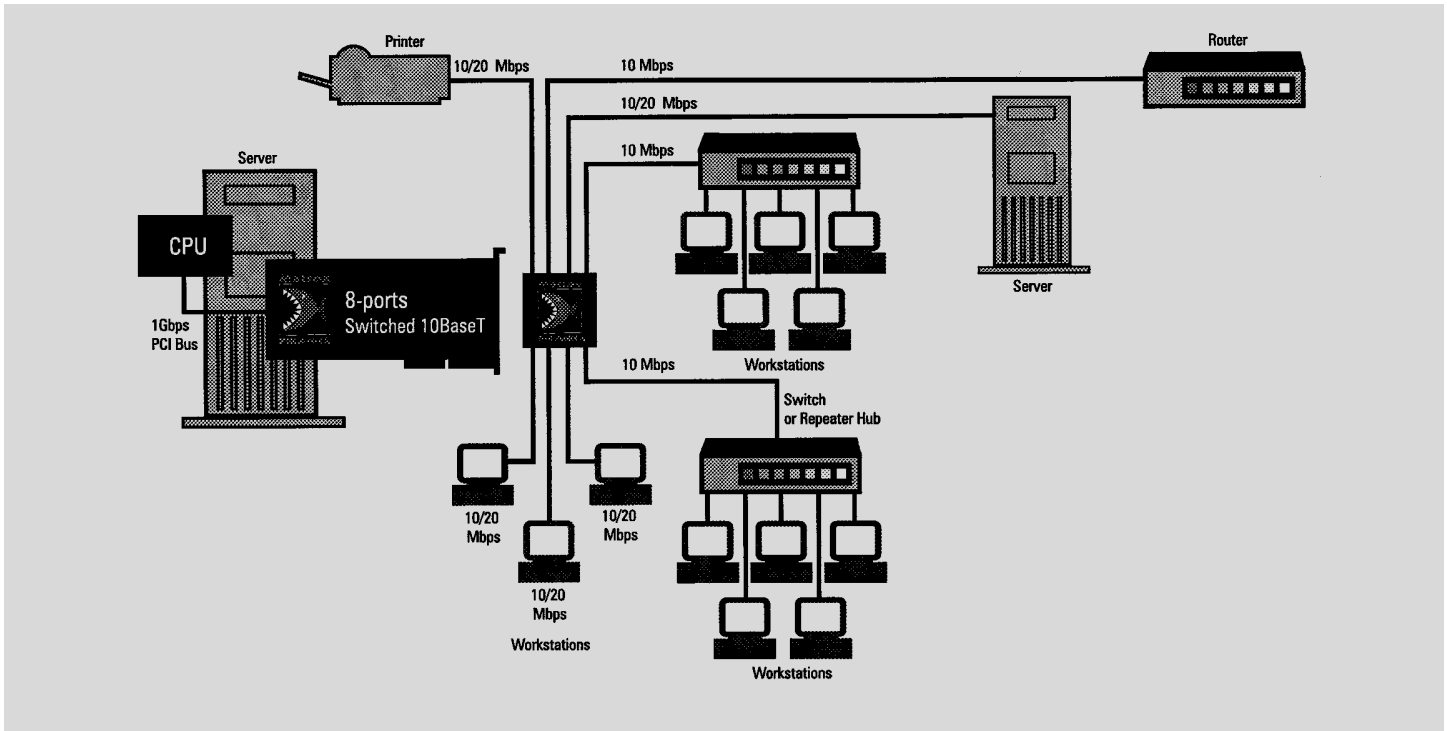
Phone: (800) 837-3611

FAX: (514) 969-6272

e-mail: [networks.info@matrox.com](mailto:networks.info@matrox.com)

WWW: <http://www.matrox.com>





non-blocking switching architecture is based on a dedicated i960 RISC processor and an internal 1 Gbps PCI bus, providing wire speed switching on all LAN segments.

The Piranha SwitchNIC-10/8 is ideally suited for servers with a limited number of PCI slots or for high throughput servers that process multiple network tasks. Each channel of 10BaseT Ethernet can be used as an Ethernet Adapter, increasing server throughput and preserving precious PCI slots. The Piranha SwitchNIC-10/8's PCI architecture and arbitration technology maximize throughput by reducing overall utilization of the server. The Piranha SwitchNIC-10/8 utilizes the extremely efficient bus-master Direct Memory Access (DMA) method for transferring data, allowing it to process high bandwidth server requests.

The Piranha SwitchNIC-10/8's PCI bus design provides a 1 Gbps, high speed link to the server's CPU allowing high-bandwidth interaction between the server and its clients. The PCI bus also provides the backbone to connect multiple Piranha boards in the same server or PC, extra bandwidth is attained simply by adding boards. The Piranha SwitchNIC-10/8's design provides built-in connectivity to any Fast Ethernet or ATM board.

**ORDERING INFORMATION**

<b>Part Number:</b>	<b>Description:</b>
NS-10/8	Matrox Piranha SwitchNIC-10/8
NS-RJ45/8	RJ-45 Connector - MDIX
NS-RJ45/0	RJ-45 Connector - MDI