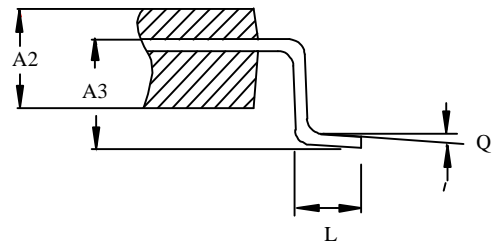
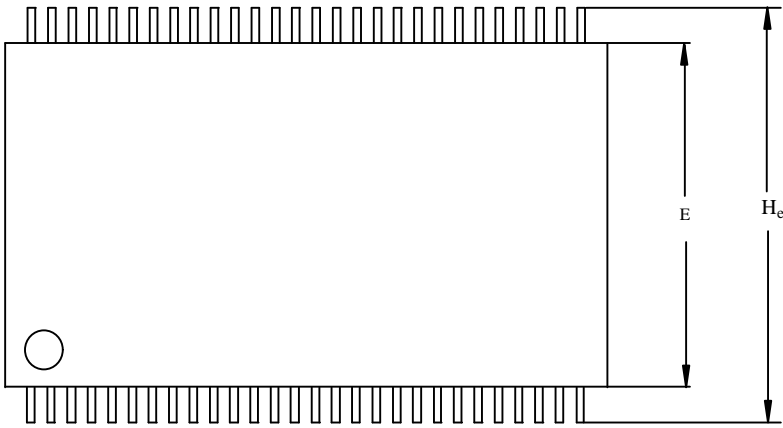
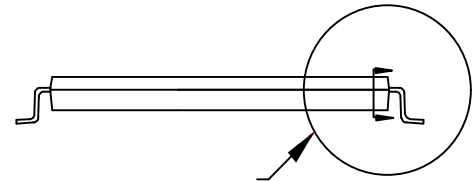
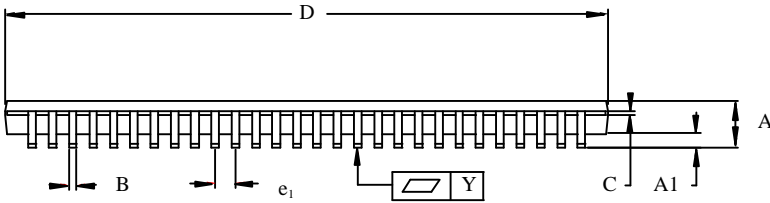




## SSOP: 56 LEAD SHRINK SMALL OUTLINE PACKAGE



Detail A



See Detail A

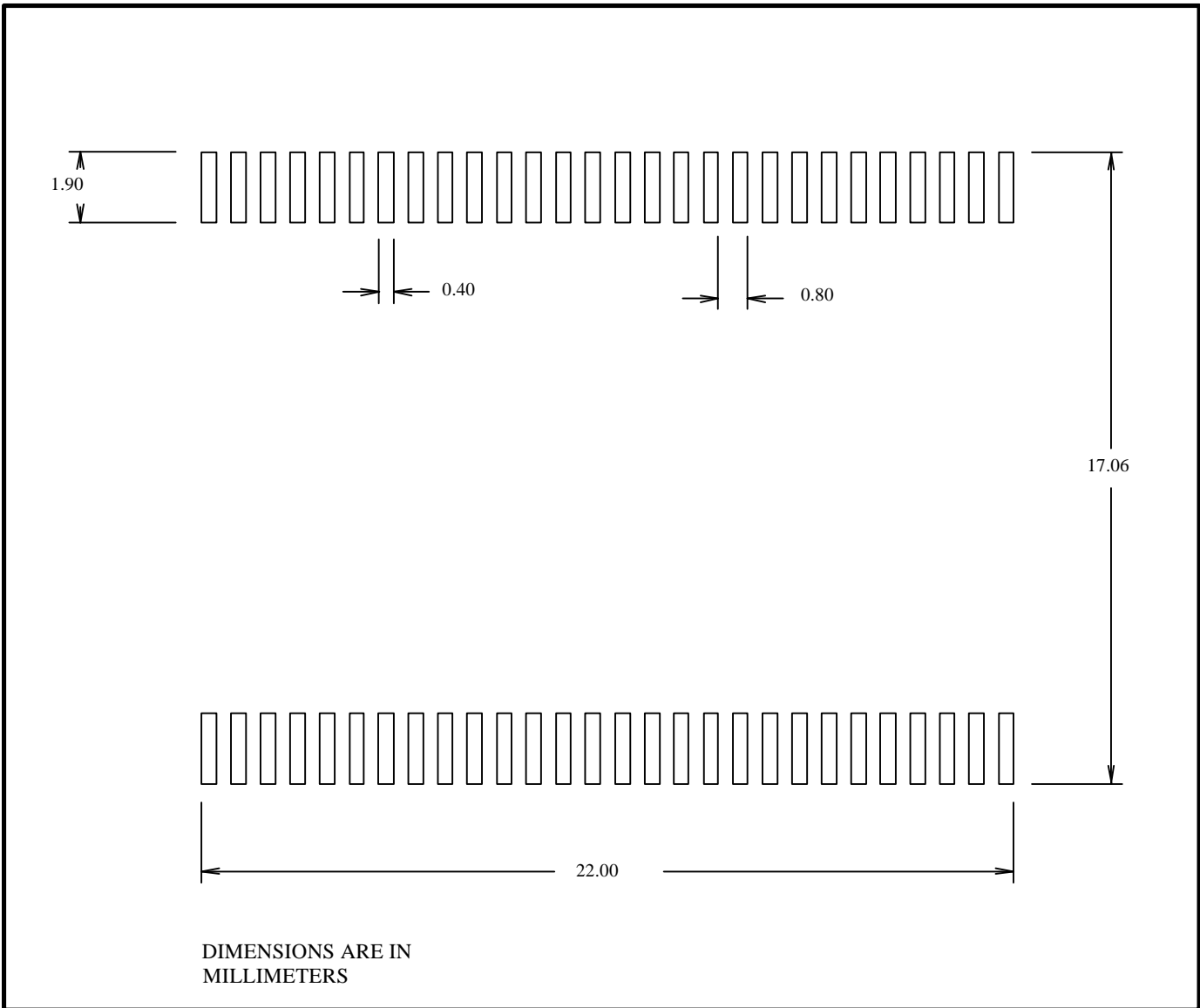
### 56 Lead SSOP Specifications

Rev. C, 1/5/95	Symbol	Millimeters			Notes	Inches			Notes
		Min	Nom	Max		Min	Nom	Max	
Package Height	A		1.80	1.90			0.070	0.075	
Standoff	A1	0.47				0.018			
Package Body Thickness	A2	1.18	1.28	1.38		0.046	0.050	0.054	
Lead Width	B	0.25	0.30	0.40		0.010	0.012	0.016	
Lead Thickness	C	0.13	0.15	0.20		0.005	0.006	0.008	
Package Body Length	D	23.40	23.70	24.00		0.921	0.933	0.945	
Package Body Width	E	13.10	13.30	13.50		0.516	0.524	0.531	
Pitch	e <sub>1</sub>		0.80				0.0315		
Terminal Dimension	H <sub>e</sub>	15.70	16.00	16.30		0.618	0.630	0.642	
Lead Count	N		56				56		
Lead Tip Length	L	0.75	0.80	0.85		0.030	0.0315	0.033	
Seating Plane Coplanarity	Y			0.10				0.004	
Lead Height	A3	1.30	1.40	1.50		0.051	0.055	0.059	
Lead Tip Angle	Q			5				5	



## SSOP Board Footprints

A typical land pad diagram for the 56 lead SSOP package is shown.



**Typical SSOP Land Pad Diagram**