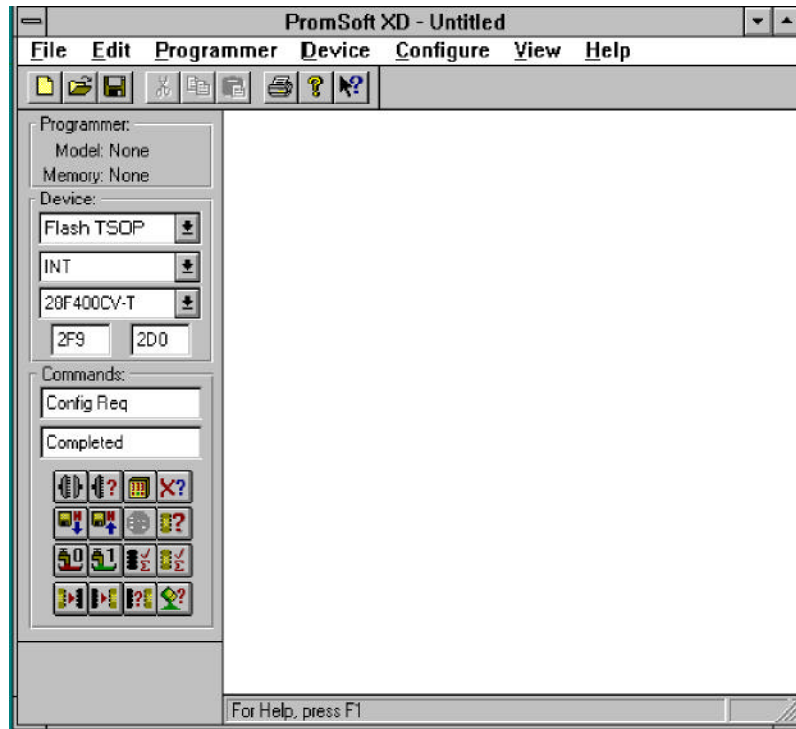


PROMSoft – XD/1.21

- First Windows* user interface for device programming
- Intel's Flash memory devices and Intel's microcontrollers are easily programmed
- Windows software creates a full production device programming workstation
- Industry's benchmark - constant programming accuracy
- Maximize your productivity using easy access menuing system
- Manage your device data by simply storing it on your PC
- Verify using onscreen error reporting
- See your entire programming setup at a glance
- F1 context-sensitive help screens
- Programmer can be hooked to a host for full high volume production



BYTEK's PROMSoft - XD is the industry's first Microsoft Windows user interface for device programmers. Already in its third revision (1.21) it has become the industry benchmark. PROMSoft - XD allows you to manage, program, verify, and edit your device data straight from your PC.

PROMSoft supports programming all of Intel's Flash memory and microcontroller components, regardless of package type, in single or gang mode across the BYTEK line of device programmers. Flexibility and ease-of-use were primary goals in the development of PROMSoft - XD. PROMSoft - XD relieves the operator of many of the detailed and error prone tasks involved in programming the wide variety of devices, and the many data formats supported by all BYTEK multiprogrammers.

PROMSoft - XD runs under Windows* 95, Windows 3.11, Windows for WorkGroups* 3.11, and Windows NT 3.51. PROMSoft is installed under Windows using a simple installation procedure. A serial cable connects the BYTEK multiprogrammer over this cable.

Sequences of commands are sent by PROMSoft - XD to the multiprogrammer to effect automatic determination of the device type, programming of devices, validation/checksum, reading of device data, and countless other features. This process is simplified by a GUI interface developed in Visual C++ 4.0 and is a 32-bit application. The interface is human-centered and so intuitive that a few clicks on the menu allows the user to maximize productivity. The F1 context-sensitive help screens also guarantee both ease of use and constant programming accuracy.

Unlimited technical support is available via Internet, telephone or fax and BYTEK's Tech Support Group is always available to answer any questions you may have. Visit our World Wide Web page to read more about PROMSoft - XD and BYTEK's entire product line.

INTEL FLASH MEMORY SUPPORTED:

28F010, 28F001BX, 28F020, 28F002BC, 28F002BL, 28F002BV, 28F002BX, 28F200BL, 28F200BV, 28F200BX, 28F200CV, 28F004BE, 28F004BL, 28F004BV, 28F004BX, 28F400BL, 28F400BV, 28F400BX, 28F400CE, 28F400CV, 28F008BE, 28F008BV, 28F800BV, 28F800CE, 28F800CV, 28F016XD, 28F016XS, Series 2 Cards, Series 2+ Cards, Value Series 100 Cards, Series 100 Miniature Cards

AVAILABILITY:

Now

CONTACT:

BYTEK Corporation
Instrument Systems Division
543 N.W. 77th Street
Boca Raton, FL 33487-1323
Phone: (407) 994-3520
FAX: (407) 994-3615
WWW: <http://www.bytek.com/bytek>
BBS: (407) 998-0378

