

## PC/104 – SDDP / SDDM

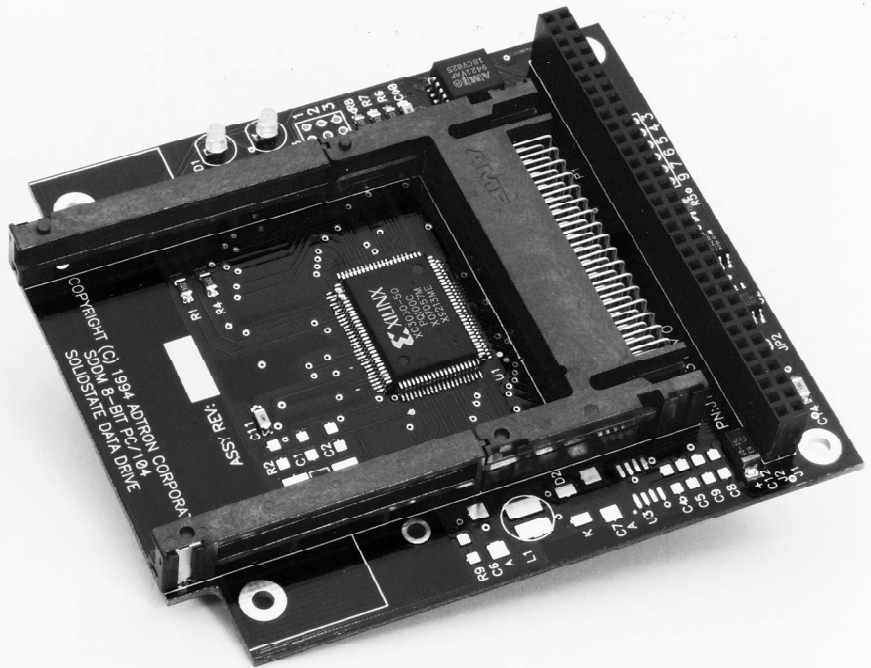
- 8- or 16-Bit, stackable PC/104 bus interface with single or dual card slots
- Complete memory and I/O PC Card bus
- Accepts Type I, II and III PC Cards
- Includes Card and Socket Services
- Optional 32Kx8 flash boot memory
- 5V operation with built-in V<sub>PP</sub> generator

Adtron's PC/104 bus PC Card drive enables an embedded computer with a PC/104 expansion bus to use 68-pin memory or I/O PC Cards. Compatible with 16-bit 80x86 computers, this PC Card drive accepts Type I, II and III flash memory, other memory technology, modem, fax and network PC Cards. An optional 32Kx8 flash memory may contain an extended BIOS for booting or application-specific code to be mapped into the computer's memory space.

Several versions of this product offer additional features of extended temperature, right or left-hand ejectors, and PC/104 connector options. When used with a flash memory card, this PC Card drive replaces a rotating disk drive with solid-state data storage for increased reliability in rugged environments.

Compatible operating systems include MS-DOS\*, Windows\*, Windows 95, QNX, Linux, and various flash file systems. Adtron's advanced Card Manager utility allows the formatting, erasing and programming of Intel Flash memory cards.

Adtron support includes a technical applications staff for telephone support and custom designs, software updates through the Adtron bulletin board, World Wide Web home page and email. Other Adtron products include PC Card drives which connect to the computer's serial port, printer port, IDE controller, ISA bus and SCSI bus.



INTEL FLASH MEMORY  
SUPPORTED:  
Series 2 Cards, Series 2+ Cards

AVAILABILITY:  
Now

CONTACT:  
Adtron Corporation  
3050 South Country Club Drive, Suite 24  
Mesa, AZ 85225  
Phone: (602) 926-9324  
FAX: (602) 926-9359  
Email: sales@adtron.com  
WWW: <http://www.adtron.com>

