

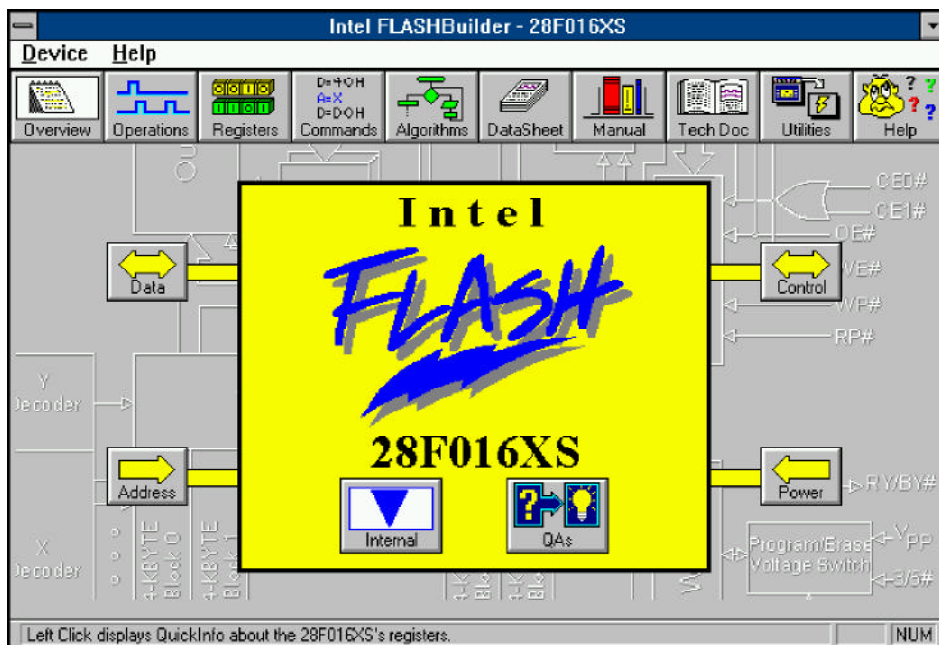
FLASHBuilder Fast Flash

- 28F016XS/XD Benchmark Utility
- Product Decoder Utility
- Flash Cycling Utility
- Source code for program and erase algorithms in both C and ASM86
- 16-Mbit Product Family User's Manual
- Family datasheets and application notes
- Timing and waveform specifications
- Flash memory overview - a high level description of flash technology and product applications
- Windows* 95-compatible

FLASHBuilder Fast Flash is a Windows-based software tool developed to facilitate the understanding of Intel's Fast Flash memory components. Through an easy-to-use graphical user interface, you are able to speed time-to-market by choosing the optimum Fast Flash memory component for your specific application.

FLASHBuilder Fast Flash supports Intel's 28F016XD and 28F016XS Fast Flash components. Ease-of-design is facilitated by FLASHBuilder Fast Flash through its intuitive interface to source code for program and erase algorithms in both C and ASM86. These can easily be edited to customize a design.

Also an aid for system design, FLASHBuilder Fast Flash provides several custom utilities. The Benchmark Utility compares the performance of Intel's 28F016XD and 28F016XS Flash memory components against alternate memory solutions. The Product Decoder Utility enables you to decipher the sometimes cryptic nomenclature of Intel's many flash memory devices. After using this product, users will be able to distinguish package, architecture and temperature identifiers taking the guesswork out of product ordering codes. While the Flash Cycling Utility provides a quantitative profile of flash memory cycling due to periodic system updates, it allows you to



change system parameters and determine how that will affect cycling capability.

FLASHBuilder Fast Flash features a graphical representation of device functional blocks within the flash memory architecture as well as quick access to information about device operations, commands, algorithms and registers. For example, the command dialog box displays on a single screen the command set and corresponding hexadecimal values, bus-cycle counts for each command, and status register output indicating a successful operation.

Access to technical information and specifications is easy. Through FLASHBuilder Fast Flash's on-line documentation you have instant access to associated application notes, datasheets and the 16-Mbit Product Family User's Manual all in hypertext format.

AVAILABILITY:
2H'96

CONTACT:
See Appendix C