

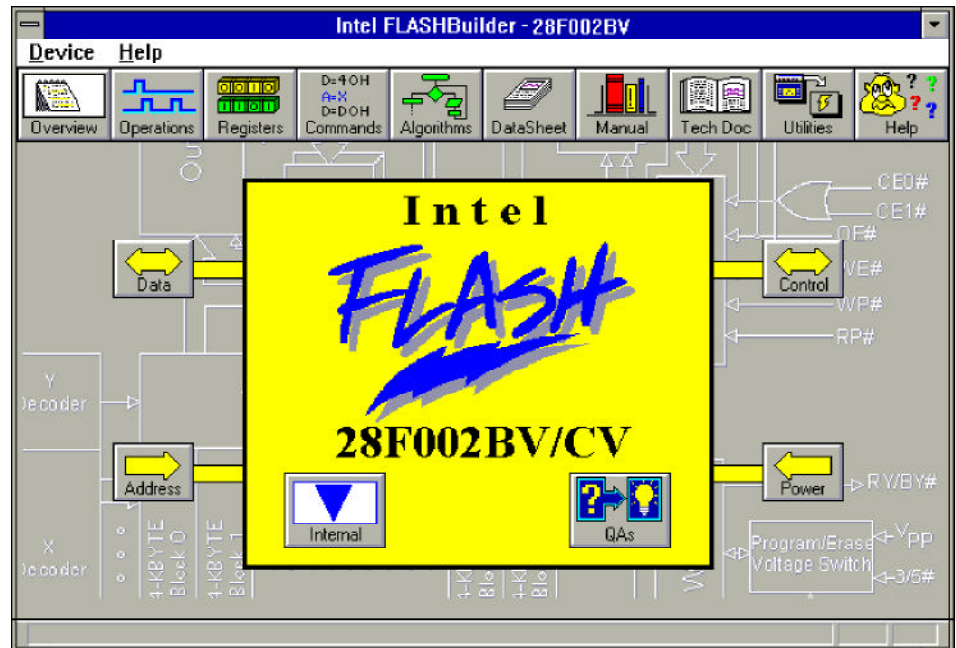
FLASHBuilder Boot Block

- Power Profiler Utility
- Product Decoder Utility
- Flash Cycling Utility
- Source code for program and erase algorithms in both C and ASM86
- Family data sheets and application notes
- Timing and waveform specifications
- Flash memory overview - a high-level description of flash technology and product applications
- Windows* 95-compatible

Intel's FLASHBuilder Boot Block is a Windows-based software tool developed to facilitate the understanding of Intel's SmartVoltage Boot Block components. Through an easy-to-use graphical user interface, you are able to speed time-to-market by choosing the optimum flash memory component for your specific application.

FLASHBuilder Boot Block supports Intel's SmartVoltage Boot Block flash memory components; 28F200BV/CV/CE, 28F002BV/BE, 28F400BV/CV/CE, 28F004BV/BE, 28F800BV/CV/CE and 28F008BV/BE. Ease-of-design is facilitated by FLASHBuilder through its intuitive interface to source code for program and erase algorithms in both C and ASM86. These can easily be edited to customize a design.

Also an aid for system design, FLASHBuilder Boot Block provides two custom utilities. The Power Profiler Utility provides information on power consumption based on operating conditions and the number of devices in the system. The tool can also generate a graphical view of flash memory power consumption versus the total system power budget. The Cycling Utility provides a quantitative profile of flash memory cycling due to periodic system updates, and it allows you to change system parameters and determine their affect on cycling capability.



FLASHBuilder features a graphical representation of device functional blocks within the flash memory architecture as well as quick access to information about device operations, commands, algorithms and registers. For example, the command dialog box displays on a single screen the command set and corresponding hexadecimal values, bus-cycle counts for each command, and status register output indicating a successful operation.

Access to technical information is easy. Through FLASHBuilder's on line documentation you have instant access to associated application notes and data sheets in hypertext format.

INTEL FLASH MEMORY SUPPORTED:

28F002BV, 28F002BE, 28F200BV, 28F200CV, 28F200CE, 28F004BV, 28F004BE, 28F400BV, 28F400CV, 28F400CE, 28F008BV, 28F008BE, 28F800BV, 28F800CV, 28F800CE

AVAILABILITY:

2H'96

CONTACT:

See Appendix C