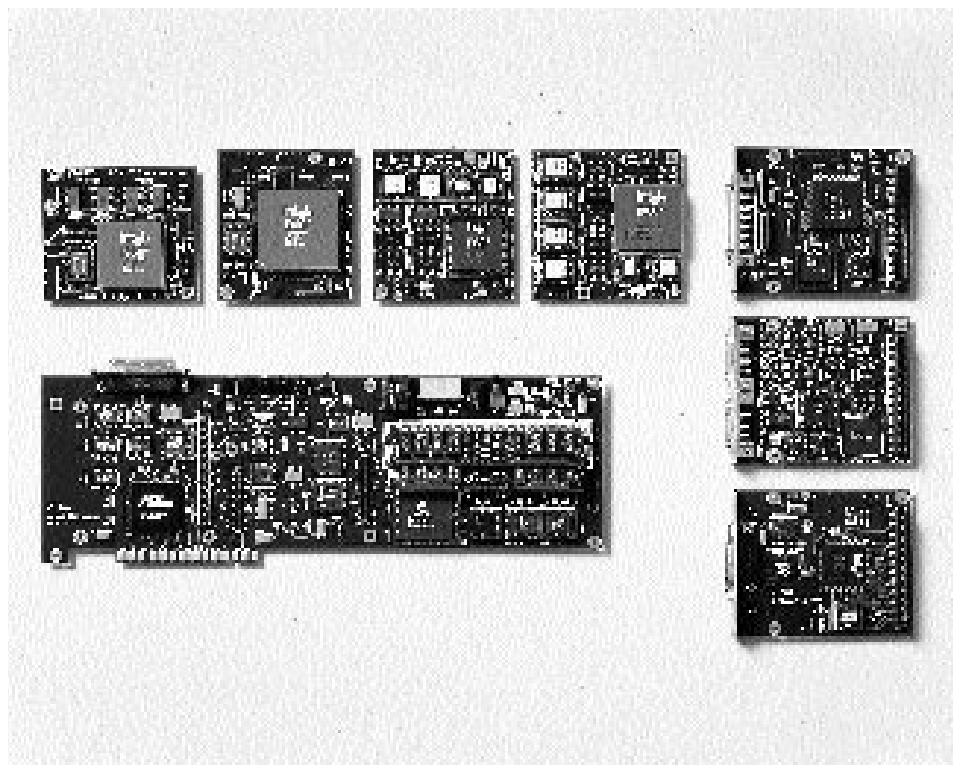


## i960<sup>®</sup> Microprocessor PCI I/O Software Development Kit

- PCI I/O Software Development Platform With Choice of Interchangeable i960<sup>®</sup> Processor Module
- Provides a PCI Bus to 80960 Bus Bridge and Can Configure Other PCI Devices in a System
- Optional Squall Module I/O Expansion Interface For SCSI-2, SCSI-3, High-Speed Serial, ATM, or 100 Mbps Ethernet
- Developers Can Custom Design Squall Modules to Suit Proprietary Applications
- GNU/960 (DOS host) Cross-Development Toolset, With Profile-Driven Compiler, Assembler, Linker, Libraries, Debugger, Monitor, and Utilities
- Fast Download Via the PCI Backplane and Parallel Port; Debug and Download Through the Serial Port
- 2 Mbytes of DRAM, Expandable to 8 Mbytes or 32 Mbytes Depending on Developer's Needs
- DRAM Controller Automatically Optimizes Wait States to Reflect CPU Type, Clock Frequency, and Memory Speed Reducing Engineering Effort
- Flash ROM for Added Developer Flexibility
- PLD Equations and Schematics Readily Available via BBS

Intel's i960 Microprocessor PCI I/O Software Development Kit is a low-cost, scalable development kit. The PCI-SDK can improve development time for emerging intelligent PCI I/O applications like ATM, Caching SCSI, RAID, and Fibre Channel.

The PCI-SDK features a standard software development platform with PLX Technology's PCI 9060 (a PCI to i960 processor bus bridge chip), an interchangeable Intel i960 processor module of your choice and an optional interchangeable I/O interface target module. The kit also includes a complete set of software



development tools and related documentation to enable improved development time.

### Interchangeable i960 Processor Modules

The PCI-SDK provides a developer with a platform to evaluate each i960 microprocessor for price advantages (less than \$10 on the low-end) and performance advantages (exceeding 100 MIPS on the high-end). This allows the developer to optimize software for performance on each i960 processor module. CPU modules are available for Intel's i960 Hx, Cx, Jx, Kx, and Sx processors.

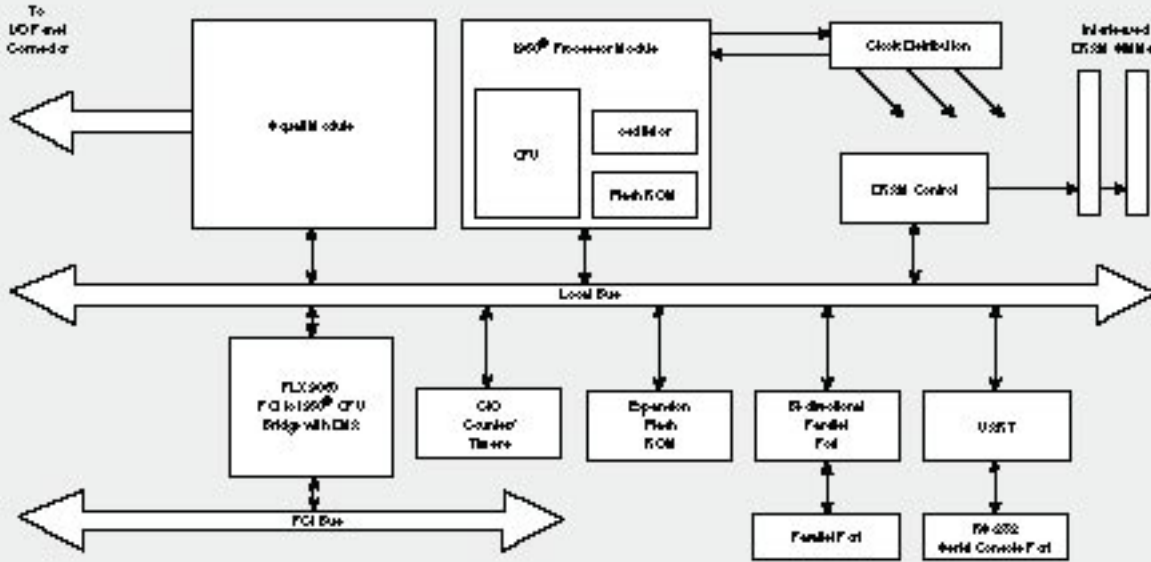
### Interchangeable I/O Interface Modules

The kit provides a software development platform for emerging interfaces like SCSI-2, SCSI-3, high-speed Serial, 100 Mbps Ethernet, and ATM, on off-the-shelf daughter cards known as Squall\* modules. Manufactured by Cyclone Microsystems, these Squall modules greatly reduce the development time of

AVAILABILITY:  
Now

CONTACT:  
Local Distributor, Intel Sales Office or  
Intel Support at: (800) 628-8686  
WWW: <http://www.intel.com/embedded/>





PCI-SDK Software Development Platform Functional Block Diagram

software applications for emerging I/O interfaces by providing a software target.

The developer also has the option of designing a Squall module for custom applications with the documentation and support provided by both Intel and Cyclone Microsystems.

**PCI 9060 Bus Interface**

The PCI 9060 is a PCI Bus Master interface for adapter boards and systems that use the i960 microprocessor. A single chip solution for PCI-based I/O designed

by PLX Technology, the PCI 9060 eliminates the need for multiple proprietary PCI components in Intel i960 microprocessor-based systems.

The PCI 9060 features mailbox and doorbell registers that allow command and status information to pass between the PCI bus devices and the local bus devices. In addition, it can generate PCI configuration cycles, enabling the PCI 9060 to become the PCI system host.

**Software Development Tools**

A full set of DOS-hosted software development tools accompanies this development platform including Intel's GNU/960 Profile-Driven C-compiler, assembler, linker, debugger, debug monitor, and utility tools.