



Squall II Modules

- SQ01 - Ethernet
- SQ02 - VSB Master with Ethernet
- SQ05 - Big Endian Ethernet
- SQ10 - SCSI-2 (Fast)
- SQ11 - SCSI-3 (Fast & Wide)
- SQ20 - Two Fast RS-422 Serials
- SQ30 - ATM-DS3
- SQ31 - ATM-E3
- SQ40 - 20-Bit Differential Input
- SQXX - Custom Modules

Squall II Modules are I/O daughter boards for the CVME964, PCI80960, PCI911, PCI912, EP80960, and SDK-PCI products. Squall II Modules allow these products to be quickly and efficiently tailored with both off-the-shelf and custom Squall II Modules.

The Squall II Module interface is in the public domain and features an enhanced set of the i960® CA/CF processor's address data and control signals. The Squall II Module interface allows intelligent I/O on the modules to DMA directly to the motherboard's memory without processor intervention.

SQ01 Ethernet Interface.

SQ02 VSB Master Interface with Ethernet.

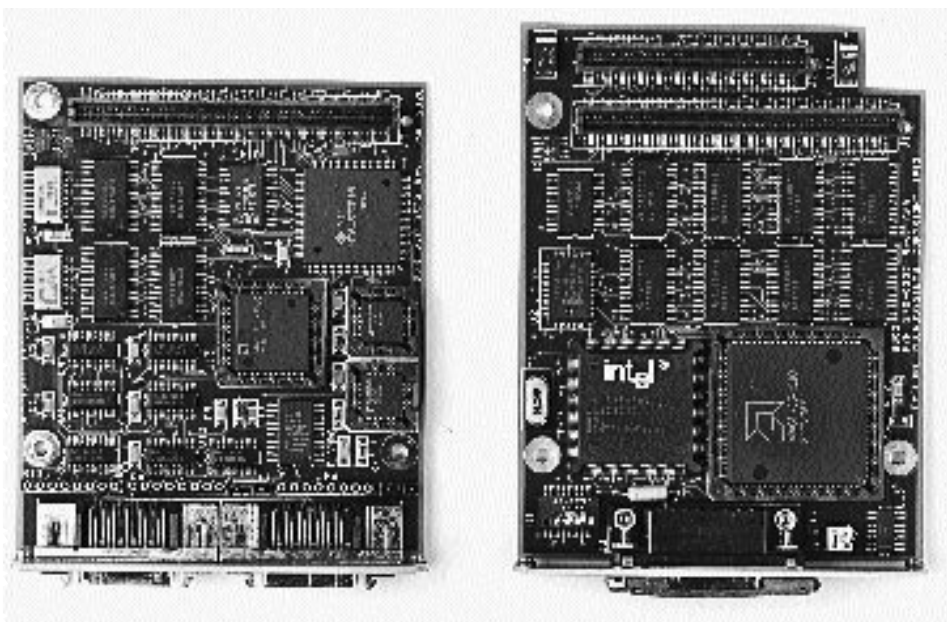
SQ05 Big Endian 10BaseT Ethernet

SQ10 SCSI-2 Fast Interface using the NCR53C710 SCSI-2 Coprocessor.

SQ11 SCSI-3 Fast and Wide Interface.

SQ20 Two RS-422 Serial Ports and one Hitachi HD64570 Serial Communications Adapter support the simultaneous operation of two T1/E1 data rate serial ports.

SQ30 ATM/DS3 Interface: Performs hardware segmentation and reassembly of ATM Adaptation Layers (AAL) 3/4 and/or AAL



5, the Physical Layer Convergence Protocol (PLCP) for DS3, and the interface for direct connection to a coaxial DS3 line. Uses both Squall II Module locations.

SQ31 ATM-E3 Interface.

SQ40 20-Bit differential input with 8K FIFO.

SQXX Custom Squall II Modules developed upon request.

BOARDS SUPPORTED:
CVME964, PCI80960, PCI911, PCI912, EP80960, and SDK-PCI

PROCESSORS SUPPORTED:
i960 CA/CF/KA/KB/JD Processors

AVAILABILITY:
Now

CONTACT:
Peter H. Zackin
Vice President of Sales & Marketing
Cyclone Microsystems, Inc.
25 Science Park
New Haven, CT 06511
Phone: (203) 786-5536
FAX: (203) 786-5025
e-mail: info@cyclone.com
For international contacts see Appendix B.