

HP B3740A Software Analyzer



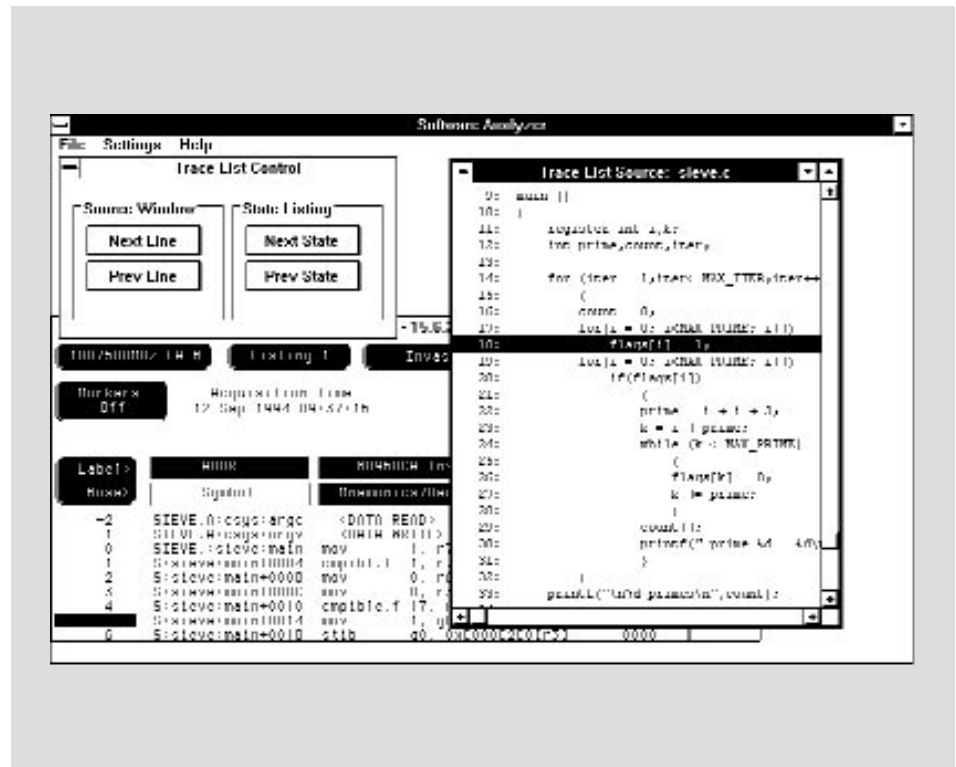
- Control Your HP Logic Analyzer From Your Host Computer
- Specify Trigger Conditions Based on High-Level Language Symbols
- Source Line Referencing For Software Trace Measurements
- Support For Popular Object File Formats Including IEEE-695
- Support For Every i960® Processor in Your Current and Future Designs
- Support For Analog Measurements, Timing Analysis, and Software Analysis in a Single Tool

The Hewlett-Packard Software Analyzer provides the versatility of a general purpose logic analyzer with an interface that is tailored for software engineers. You can debug your i960 processor programs at the source code level while retaining the benefits of easy set-up, general purpose analysis measurements, and product reuse.

The HP Software Analyzer is a graphical user interface that allows you to control your HP logic analyzer over the network. Trigger conditions can be specified as program symbols or line numbers. When the trace is captured, it is displayed as high-level source code.

And since the interface runs on your workstation or PC, you can use the real-time state analyzer side by side with the rest of your software development tools, such as source code editors, compilers and debuggers. Now you can move between the logic analyzer and your debugger much more gracefully, and correlate real-time trace measurements with your source code.

The interface is divided into three windows. The control window is identical to the screen on your HP logic analyzer. From this window you can input any measurement request to the analyzer, such as defining a source line to trigger on. Once a trace is complete, the control window displays it in i960 processor



assembly mnemonics. The source code corresponding to the trace measurement is concurrently displayed in the source window. The two windows are interlocked so you get a time-correlated view of your code execution in both high-level source statements and i960 processor assembly language. A third window labelled "Trace List Control" allows you to step through the captured trace by either source lines or bus states.

In addition, HP protects your investment in i960 processor debugging tools. Your HP logic analyzer and software analyzer interface are completely reusable when you migrate your design from one i960 chip to another. All you need is a new processor probe, and you're up and running with sophisticated hardware and software debugging tools.

HOST SYSTEMS SUPPORTED:
PC running MS-Windows, Sun SPARC workstations, HP Series 700 workstations

PROCESSORS SUPPORTED:
i960 Sx, Kx, Jx, Cx, Hx, MC Processors

AVAILABILITY:
Now

CONTACT:
HP Microprocessor Development Hotline
Phone: (800) 447-3282
FAX: (719) 590-5054
Hewlett-Packard Company
Attn: Sales Development Dept.
P.O. Box 2197
Colorado Springs, CO 80901-2197
For international contacts see Appendix B.

