

# pSOSim\* Real-Time Operating System Simulator



- pSOSystem Application Development Without Target Hardware
- pSOSystem Application Development in Native UNIX Environments
- Integration With Native UNIX Tools
- Support For All pSOS+ System Calls
- C++ Class Library Support
- SPARCstation and HP9000-700 Workstation Hosts

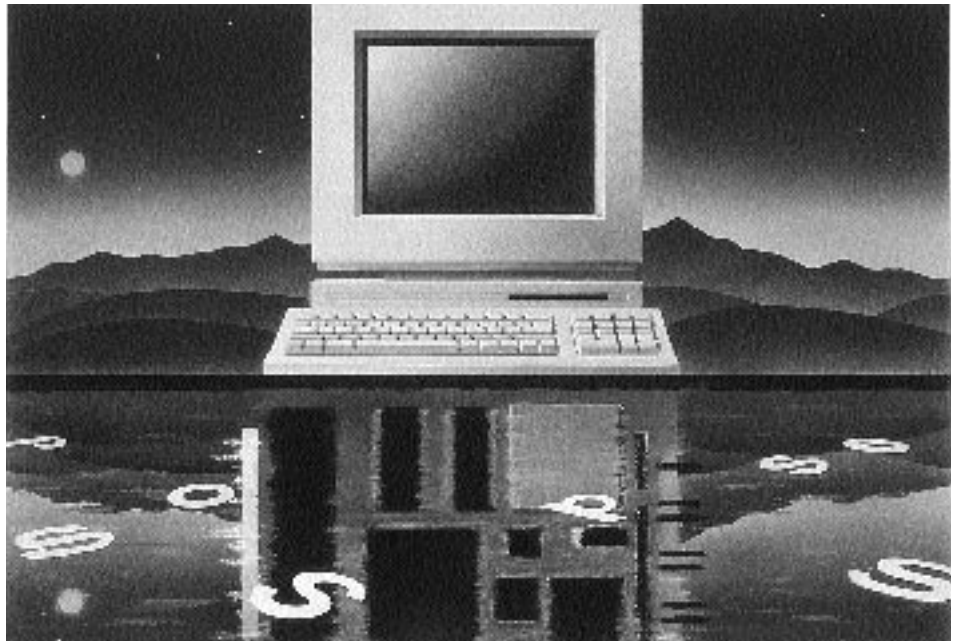
pSOSim\* allows pSOSystem-based multitasking applications to be developed in a native UNIX environment. With pSOSim, software development can begin before hardware is available or can be used when hardware is not easily accessible.

Prototype hardware can be expensive. With the number of software engineers involved in development projects, not every software engineer has the luxury of having their own private prototype hardware on which to develop. pSOSim can provide a low cost development alternative.

The pSOSim environment makes the pSOSystem\* multitasking operating system available as a UNIX library so applications can be developed using native UNIX tools. It also provides capabilities for simulating interrupts and device drivers. This allows realistic modeling of an embedded system target.

## Host Development Tool Support

Any UNIX native debugging or programming environment can be used since pSOSim can be linked into an application like a UNIX library. There is no need to learn a new debugger and sophisticated UNIX programming environment features such as run-time checking can be used. In addition, productivity is further enhanced for large applications by the elimination of long download times to a target system.



## Application Building Support

To expedite application development, pSOSim provides sample applications, configuration files and makefiles that simplify building pSOSystem applications. Additionally, board support packages and device drivers are provided to give a framework with which to build upon. This allows the application to be easily customized before hardware is available and can be quickly reconfigured for testing on a real target.

HOST SYSTEMS SUPPORTED:  
Sun SPARCstations; HP 9000 series 700 workstations

PROCESSORS SUPPORTED:  
i960® Processor Family

CONTACTS:  
Integrated Systems, Inc.  
3260 Jay Street  
Santa Clara, CA 95054  
Phone: (800) 543-pSOS (7767)  
(408) 980-1500

FAX: (408) 980-0400

e-mail: sales@isi.com

For international contacts see Appendix B.

