

ChipView-x96 ROM Monitor Debugger

- Interfaces to Any Intel MCS[®] 96 Microcontroller Board
- High-Level Debug Replacement For Intel's ECM
- Supports 16-Bit and 24-Bit Intel MCS 96 Microcontrollers
- Assembler Source of RISM Included
- Key-Compatible With Borland's Turbo Debugger
- High-Level Debug C, PL/M96, and Assemblers
- Point & Click to Breakpoint, Watch
- Over 14 Fully Interactive Views
- ChipView-x96 Products Share Common User Interface
- DOS or Windows-Based Application

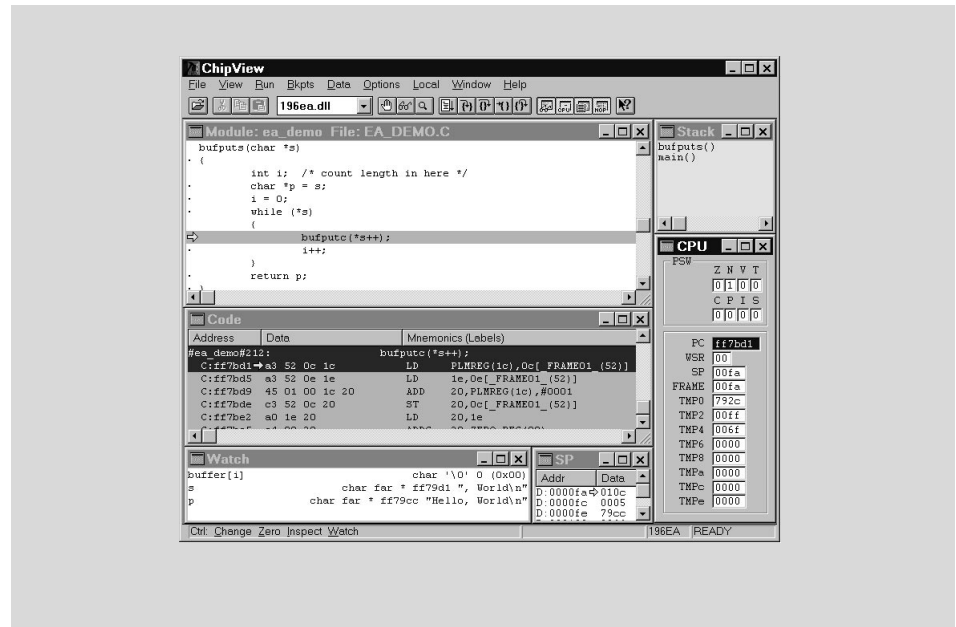
Turbo C programmers can move to debugging Intel MCS 96 microcontroller embedded C instantly, as ChipView-x96 is key-compatible with Borland's award-winning Turbo Debugger. The ChipView Windows Debugger is easy to learn since it makes full use of state-of-the-art Windows controls, such as toolbars, tooltips, drag-and-drop, and context-sensitive pop-up menus.

The RISM-based ROM Monitor version of ChipView-x96 interfaces directly to any Intel evaluation or demo target board running RISM for the Intel MCS 96 microcontrollers. Assembly source of the RISM monitor kernel is provided to permit user-customized implementations.

Even under MS Windows*, ChipView-x96 runs rock-stable at speeds up to 115 Kbaud. ChipView-x96 is the High-Level Debugger replacement for Intel's ECM host software.

Views to choose from include: source-level code, assembly-level code, watches, inspectors, on-chip registers, C call stack, variables, breakpoints, session log, memory dumps, and more.

See all variables (global & local) in the Variables Window, or track a few expressions in the Watch Window. Decompose



arrays or structures across several Inspector Windows. ChipView-x96 allows point and click to follow a linked list.

ChipView-x96 is available with a Simulation engine, a RISM-based ROM Monitor engine, or interfaced to popular Intel MCS 96 in-circuit emulators and ROM emulators. ChipView-x96 has High-Level support for C compilers and Assemblers from Tasking, IAR (Archimedes), and Intel.

MICROCONTROLLERS SUPPORTED:
8xC196Kx/Mx/Nx

DEVELOPMENT PLATFORMS:
Windows version Host: IBM computer or compatible 386 with at least 3 MB RAM, running Microsoft Windows (3.1 or 95).
DOS version Host: IBM computer or compatible 286, 386 with at least 3 MB RAM, running DOS 5 or later, or Microsoft Windows (3.1, 95 or NT).

AVAILABILITY:
Now (CVx96W-M ChipView-x96 Windows RISM-based ROM Monitor Debugger - June '96)

CONTACT:
ChipTools, Inc.
1232 Stavebank Road
Mississauga, ON L5G2V2 Canada
Phone: (905) 274-6244
FAX: (905) 891-2715
e-mail: info@chiptools.com
BBS: (905) 891-3095 (8-N-1)
WWW: <http://www.chiptools.com>
For international contacts, see Appendix B.

 **CHIPTOOLS**